

# Goldpac Instant Card Issuance Kiosk Solution

The ability to quickly acquire new customers and instantly issue financial payment cards whether debit, credit or ATM gives issuers a highly competitive way to capitalize on potential market opportunities. Whether performing account application, issuance of a new card or replacement of an existing card, the increased levels of service quality and convenience offered will be felt and appreciated by potential and existing cardholders alike.

- ◆ Instantly issue a variety of financial payment cards across multiple locations via a network of kiosks, card printing and embossing equipment.
- ◆ Increase propensity of card usage through pre-activated, instant issued cards.
- ◆ Meet different market requirements for enrolment and card issuance through customizable feature sets.
- ◆ End2end user enrolment and card issuance capabilities.
- ◆ Personalization bureau-grade technologies.
- ◆ Complete control of, and monitoring of the entire fleet of distributed kiosks, card printers and embossing equipment.
- ◆ Adaptable and customizable electronic Know Your Customer (eKYC) options.

## Multi-Scenario Solution Application

### Retail Banking

- ◆ Credit
- ◆ Debit
- ◆ ATM
- ◆ Prepaid

### Loyalty



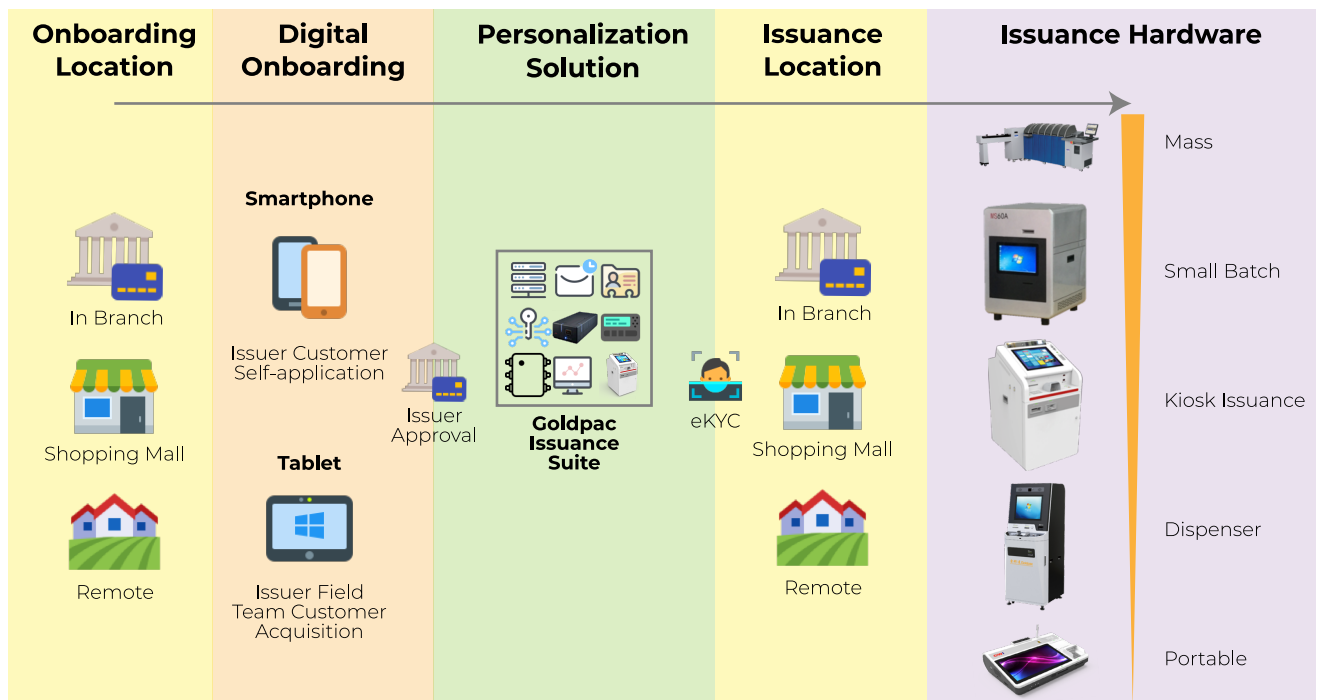
- ◆ Membership
- ◆ VIP
- ◆ Rewards

### Payroll



- ◆ Corporate Payroll
- ◆ Staff

## Multi Location Card Issuance



# Goldpac Issuance Suite



## Goldpac Issuance Suite

- ◆ A highly flexible and adaptable system to centrally manage a network of remotely located card personalization equipment.
- ◆ Provide highly secure instant issuance services from any location.
- ◆ Built using industrial-grade technologies used at Goldpac personalization bureaus.



## Data Preparation

- ◆ Converts raw cardholder data into standards-based, compliant data in a format ready for personalization.
- ◆ Accepts any input file format and can be adapted to generate any standards-based output file format to suit the needs of a variety of industry sectors.



## Personalization Workflow Supervisor

- ◆ An operations management module designed exclusively for the purpose of managing and organizing personalization tasks.
- ◆ It is a job scheduler, data dispatcher, shipping and mailing management and status monitoring tool rolled into one.



## Key Management System

- ◆ A highly integrated secure hardware and software module that is used to manage the lifecycle of the security keys used throughout the system.
- ◆ In addition to key generation, offers SDA computation, 3DES key diversification and RSA signature calculation and verification.



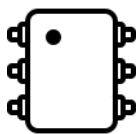
## Instant Issuance Module

- ◆ Provides support for classic distributed card issuance capabilities allowing issuers to issue cards at a remote location.
- ◆ Can be used in conjunction with an existing Goldpac Instant Issuance deployment or setup and run in parallel as a new instance.



## Onboarding Module

- ◆ Built in accordance with local market and issuer requirements, it handles the process of consumer data collection as part of a customer acquisition deployment process.
- ◆ Can support a number of different eKYC options and implementations.



## Endpoint Driver Modules

- ◆ These are tightly integrated software communication modules that drive personalization endpoint equipment.
- ◆ A variety of different 3rd party endpoint equipment are supported in addition to the custom kiosk drivers included in the solution.



## Endpoint Management System

- ◆ A supervisory and monitoring system that tracks the operation and status of a fleet of kiosks and endpoint equipment.
- ◆ It can report a number of equipment parameters\* including consumable levels, system health as well as card stock levels.

\* Actual number and type of data reported varies from manufacturer to manufacturer.



## Endpoint Equipment

- ◆ The Goldpac Issuance Suite can interface with a variety of personalization equipment types to suite both performance and budget needs.
- ◆ The solution can simultaneously work with production-grade, desktop, portable and also kiosk card issuance equipment.